



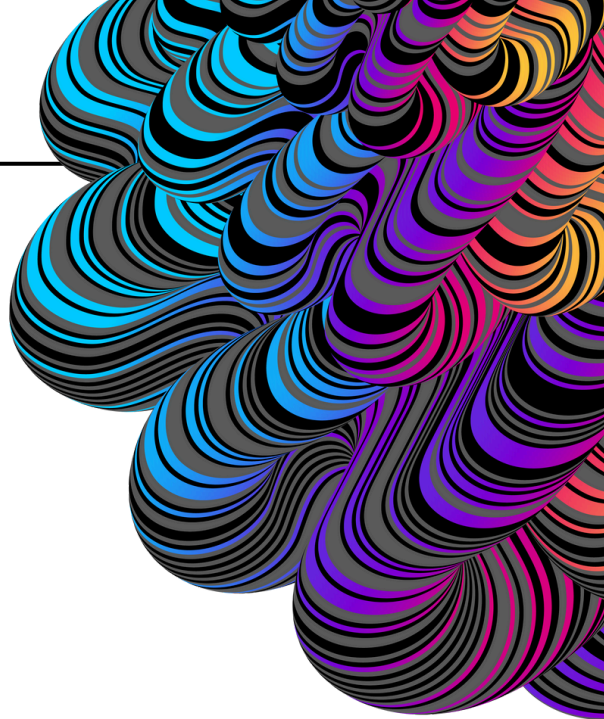
DIGITALDIVIDE SIMULATION

an immersive
experience to illustrate
the real-life impact and
challenges faced by
people with limited
access to technology
and the skills needed to
participate in digital life.

kcdigitaldrive.org
ddsim@kcdigitaldrive.org



KC Digital Drive is the bi-state Kansas City civic nonprofit that supports the broadband, connectivity and digital equity ecosystem. We have been at the forefront of the Digital Inclusion issue since 2014, working toward digital equity and shaping the regional ecosystem while expanding our expertise nationally through thought-leadership and digital equity projects.



Digital Equity & Emerging Tech Experts



**Aaron
Deacon**

MANAGING
DIRECTOR



**Kari
Keefe**

DIRECTOR OF
OPERATIONS



**Leslie
Scott**

DIGITAL
INCLUSION
MANAGER



**Leah
Henriksen**

PROGRAM
COORDINATOR



**Jim
Starcev**

EMERGING TECH
MANAGER



**John
Fitzpatrick**

COMMUNITY
HEALTH
STRATEGIST



**William
Crumpler**

PROGRAM
ANALYST

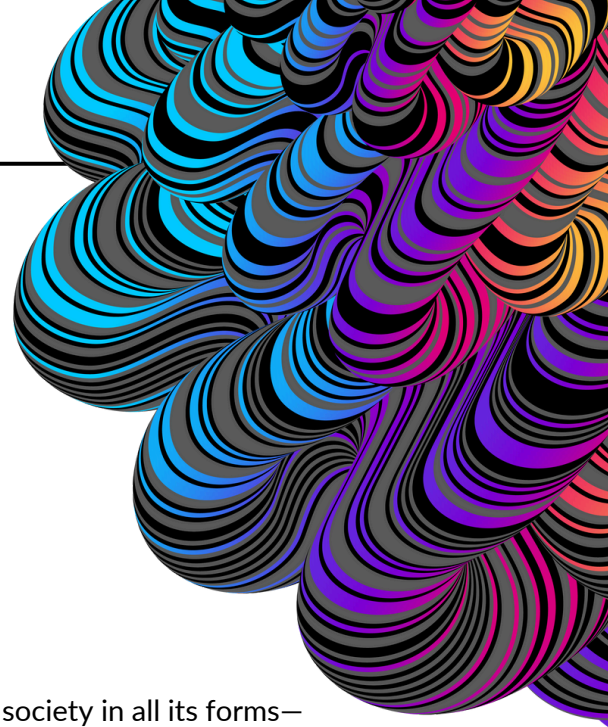


**Carol
Meyers**

DIGITAL SKILLS
TRAINER



DIGITALDIVIDE SIMULATION



The digital divide is a persistent barrier to participation in digital society in all its forms—workforce and the economy, social and cultural life, and democracy and political decision-making. Digital inclusion is not an isolated issue, and it is bound up with many other barriers to participation in society. While being on the wrong side of the digital divide makes these barriers more difficult to overcome, technology and access alone will not resolve these problems.

This is a reality for many individuals and families. But unless you've experienced what it is like to be shut out of the digital world, it's difficult to truly understand. The Digital Divide Simulation helps to bring about a new level of empathy and understanding for this compounding issue.

The Digital Divide Simulation is an experiential event designed to illustrate the real-life impact and compounding challenges faced by individuals with limited or no access to technology.

What we believe

- It is not a game.
- It promotes awareness.
- It increases understanding.
- It inspires local change.
- It transforms perspectives.

How it works

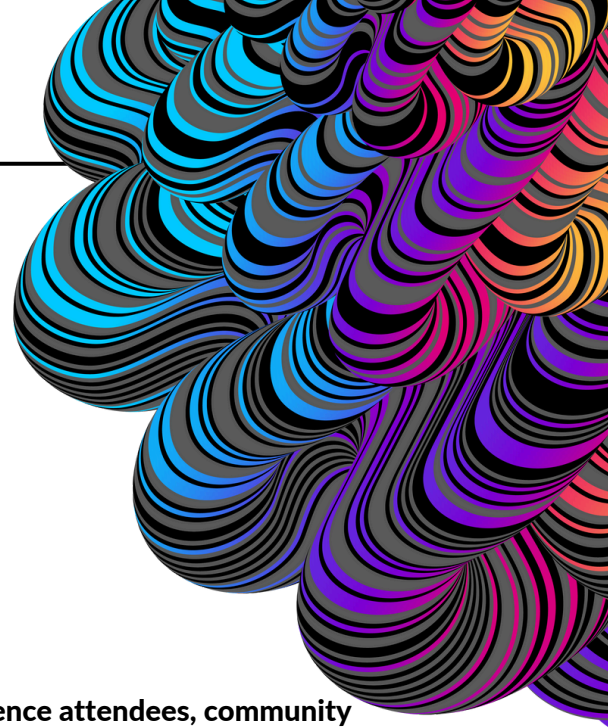
Over the course of an hour - in (4) 15-minute weeks - a facilitator takes participants through an immersive experience in the life of a real-life persona where they role-play a well-articulated sequence of activities and obstacles over a simulated month living in their shoes.

What it looks like in action

- It starts with a pre-sim explainer to build digital inclusion and digital equity context and hand out Persona Kits with instructions.
- Followed by an hour-long simulation.
- Finishing with a post-sim facilitated break-out discussion to bring about clarity and discuss real solutions to improving the lives and outcomes for people living with limited or no access to technology, and "how might we" ways to break through the barriers to participation in digital life.



DIGITALDIVIDE SIMULATION

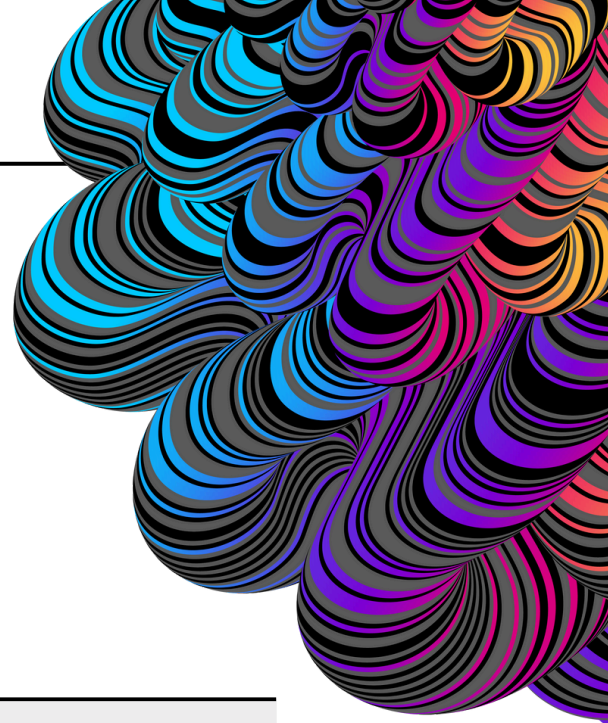


Host a Digital Divide Simulation for stakeholders, staff, conference attendees, community members, and others.

- Half-day event facilitated by KC Digital Drive includes:
 - 2 facilitators + two hours of advance planning
 - Up to 60 participants
 - Email template for participant marketing and recruiting
 - Flyer template for general marketing
 - Custom-printed elements and game pieces
- Full-day engagement
 - Full day - includes half-day simulation event plus half-day for time with KC Digital Drive digital inclusion/equity experts for meetings with stakeholders or elected officials, strategic visioning on digital equity, or consulting on DI/DE planning, practices, funding, and coalition-building.
- Purchase a License + Kit + Training to host your own (Coming in 2025)
 - Licenses are available for organizations to purchase online and renewed annually.
 - Kits are shipped to licensees, and include:
 - Simulation game pieces (timers, placards, activity cards)
 - Facilitator Handbook with instructions on planning, promoting, directing, and facilitating the Simulation
 - Facilitator slide presentation with instructions, talk-track, and speaker notes
 - 12 resource station kits with instructions and accessories
 - 40 persona kits, instructions and online access to a growing inventory in the Digital Divide Simulation Library
 - Access to a shared file for all printable materials
 - Facilitator training options:
 - In person - locations and times vary (ask us for details)
 - Virtual - participants must have attended a Simulation in the past to be eligible for this option.



DIGITALDIVIDE SIMULATION



Digital Divide Simulation – Experience Options*	Price
Full-day Engagement - includes a half day simulation facilitated by KC Digital Drive, and a half day to work with stakeholders or policy makers around digital equity planning, ecosystem development, or coalition-building through custom panel discussions, meetings or presentations, or other engagement strategies	\$10,000
Half-day Simulation - includes the 3-hour simulation facilitated by KC Digital Drive	\$5,000
Sim Kit, Training + 1-Year License - we are exploring how best to empower organizations to conduct your own internal or community-based simulations - stay tuned	TBD

**Fees include 2 facilitators and do not include travel costs to locations outside Kansas City metro nor any venue or event-related costs.*

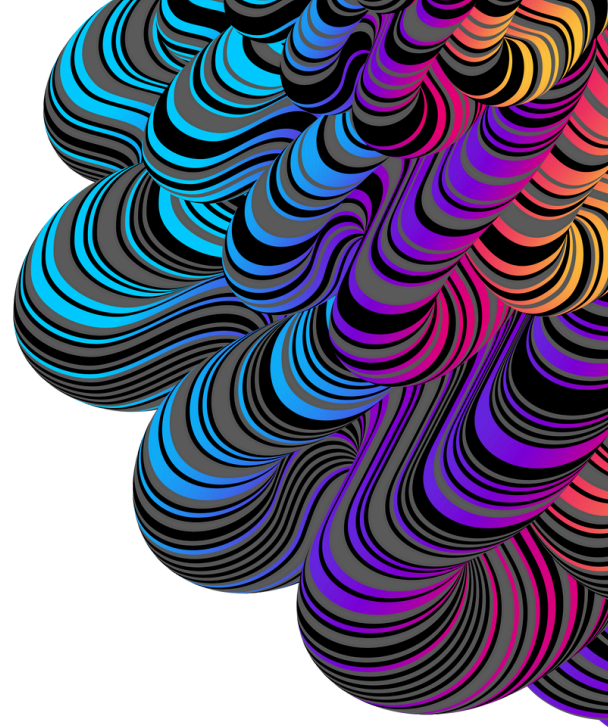


LEARN MORE!

Watch videos of past simulations, and see how it works and how you can bring this experience to your community or organization.

Let's talk.

DIGITAL DIVIDE SIMULATION



Digital Equity Office
LAMP Campus
1801 Linwood Blvd
Kansas City, MO 64109

Innovation Office
Library District
111 W 10th St
Kansas City, MO 64105



@KCDigitalDrive



@KCDigitalDrive



@KCDigitalDrive



kcdigitaldrive.org